

# INTERIOR, EXTERIOR & CABINET PAINTING INFORMATION



## STEP 1. READ & AGREE TO YOUR PROJECT AGREEMENT

When you gain access to your project dashboard, the first step will be to read and agree to your project agreement. This is a legally binding document that outlines the terms and conditions of your painting project. Please give it your full attention before agreeing to its terms. After you have read over the project agreement and agree to its terms, please return to your dashboard, tick the agree check-box and click submit so that our team receives a notification that you have completed this step.



## STEP 2. SUBMIT YOUR 50% DEPOSIT

On your project dashboard you will see a section that takes you to your billing page. On this page, you will be able to submit outstanding payments. Before your project can get started, you will need to pay the 50% deposit. Please do this in a timely manner, as your paint will not be ordered until after the deposit is received.



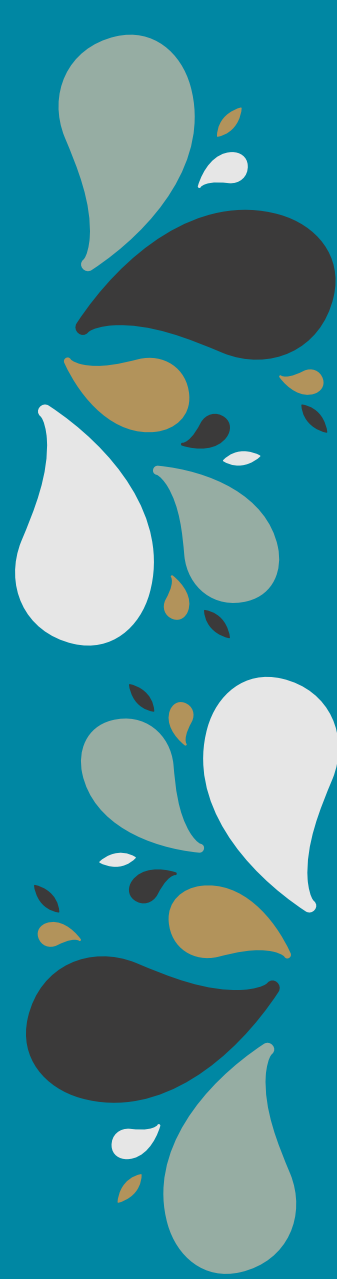
## STEP 3A. PICK YOUR INTERIOR & EXTERIOR COLORS & SHEENS

Step 3A is to choose your interior and exterior paint colors and sheens and submit them to us via your project dashboard. We use a wide variety of paint vendors and products, so we ask that you please refer to your signed proposal to see which vendor and paint products will be used for your project. If any paint upgrades were made, please make sure that you double check your proposal for these.

The colors available for your project can be found at the vendors in-store locations or on their website. It is recommended that the colors you choose come from the vendor that the paint is being ordered from. For example, pick a Sherwin Williams color if we will be using a Sherwin Williams paint product for your project. If you decide on a color that is not from the vendor that the paint is being purchased from, we can still match it for you. However, once the paint has been matched & made up, we recommend planning a visit to the vendors in-store location. This way we can guarantee that the matched colors are to your satisfaction.

Furthermore, choosing the paint sheen for each color will impact the look of the paint on the selected surface as paint sheens dictate how shiny and reflective your paint is. Use the links below to answer any questions you may have regarding paint sheen. Every paint product has a different range of paint sheens. Only some paint sheens are available in certain products. For this reason, we may have to adjust your sheen based on its availability. Please check 'Document Two: Paint and Sheen Information' for the paint we will be using for your project.

Colors can be changed at any time until the day your paint is ordered. You can do this by resubmitting any of your color and sheen choices in step two. However, once the paint is ordered, any color change requests will come at an additional charge. Paint is generally ordered at least one week before the beginning of the project.



[INTERIOR PAINT SHEEN INFORMATION](#)

[EXTERIOR PAINT SHEEN INFORMATION](#)

## STEP 3B. PICK YOUR CABINET COLORS & SHEENS

Step 3B is to choose your cabinet paint colors and sheens and submit them to us via your project dashboard. We use PPG for our cabinet paint. PPG colors can be found at a PPG store or at any Home Depot. We recommend you visit a one of their in-store locations to assess your color options. If you decide on a color that is not PPG, we can still match it for you. However, we recommend that we plan a trip for you to visit the PPG store in Seattle once the paint has been made, so that we can guarantee that the matched colors are to your satisfaction. The PPG store address is 2925 4th Ave S, Seattle, WA 98134.

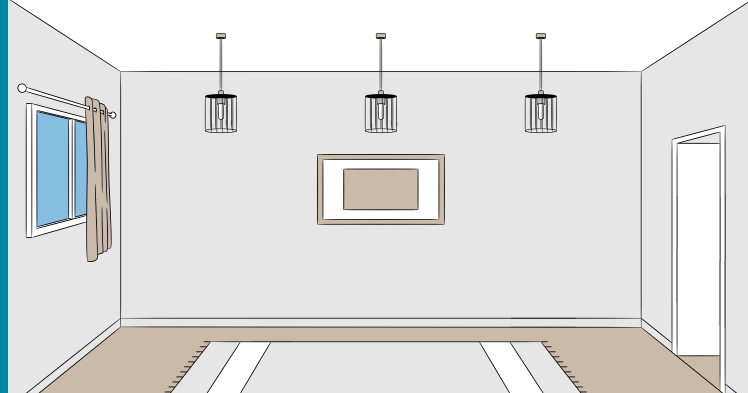
Furthermore, choosing the paint sheen for each color will impact the look of the paint on the selected surface as paint sheens dictate how shiny and reflective your paint is. Most cabinets are painted in Satin or Semi-Gloss sheen, with Semi-Gloss being the shinier sheen.

Colors can be changed at any time until the day your paint is ordered. You can do this by resubmitting any of your color and sheen choices in step two. However, once the paint is ordered, any color change requests will come at an additional charge. Paint is generally ordered at least one week before the beginning of the project.

## STEP 4A. PLAN FOR YOUR INTERIOR PROJECT TO START

When our team begins the interior painting process, it is recommended that you choose one room to continue using while the rest is being painted. This mostly applies to those whose entire interior is being painted. The master bedroom often makes the most sense and we advise that this room be closed off as much as possible to prevent paint odor getting in. Once the other rooms have been painted, you will need to switch rooms. In order to reduce lingering paint odor, it is recommended that the ventilation throughout the house is maximized by turning on fans and opening windows. The day before start of your project, please take everything off the walls and remove any valuables from the rooms that are being painted. Similarly, please remove all furniture or if not possible, move your furniture to the middle of the room, where it will be safely covered.

During the painting process, while we do our best to accommodate you, much of the home will be inaccessible and so we ask that you please make preparations for this. The timeline for the completion of your project is dependent on size of the project and is subject to change based on the amount of preparation that is necessary. Typically, project length ranges from 2-5 days.



## STEP 4B. PLAN FOR YOUR EXTERIOR PROJECT TO START

Before any paint is applied to your home, it will need to be pressure washed. Pressure washing will take one day and will need to be performed at least one day before painting. Everything that is next to the house must be moved at least 10+ feet away from the house or inside the house. Anything left near the house will be in the way and will get very dirty. If objects are not adequately moved on the day of pressure washing, and our employees must move objects, there may be an added charge. Please make sure all windows are shut as dirt will fall to the ground during the pressure washing process. This dirt will be removed the day the pressure washing is complete.

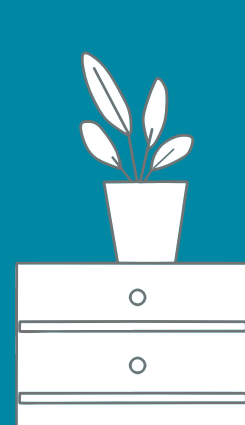
Exterior painting is subject to the weather and can not be completed during the rain or extreme cold. For this reason, exterior painting becomes increasingly difficult during the winter and most exterior painting is done from May-August in the Seattle area. If you are requesting exterior painting outside of these months, it is possible that the job will be delayed for an extended period of time until weather improves. The timeline for the completion of your project is dependent on size of the project and is subject to change based on the amount of preparation that is necessary. Typically, project length ranges from 2-5 days.



## STEP 4C. PLAN FOR YOUR CABINET PROJECT TO START

Before your project can get started, there are a few things that need to be done. Please remove all items from your counter tops and the vicinity of the cabinets. Items can be left inside of cabinets that are not being painted on the inside, i.e., any cabinets that are not open shelves or glass fronts. These items can be left if they are pushed back into the cabinets where they will not interfere with masking or be knocked over. Please remove all items from drawers. Any items left in cabinets are done so at your own expense. While these cabinets will be masked over, there is still the possibility of these items getting dirty or paint on them. These items will also be inaccessible. Any hardware changes must be purchased and obtained before project start.

On the first day of the job, employees will enter the home and begin prepping and painting the cabinets. They will remove all doors and drawer fronts to be brought back to our custom built, off-site spray booth. Once the in-home section of the job is complete, employees will begin working offsite on these cabinet doors and drawer fronts. Once those are completed, doors and drawers will be returned to the home and reinstalled along with any hardware improvements. The timeline for completion of the project is dependent on the size of the project and is subject to change based on how much preparation is necessary. A small job may be completed in one week, while a larger job is more likely to take two weeks.



## ADDITIONAL INFORMATION

- Once colors are finalized and ordered, any color change requests will incur an additional charge.
- Homeowner must be present for final walkthroughs on final day of the job. All touch-up must be noted that day. Any extra touch-up needed after the crew has left the home will be completed for an additional charge when scheduling allows. This does not include warranty work, which will be done free of charge as specified by the warranty.
- You will automatically be enrolled as a reference for our future customers for 90 days after completion of the job unless you specify to be removed from our reference list. Reference includes communicating with future customers through phone, text, or email about the quality of our work and overall satisfaction.